



U.S. Fish and Wildlife Service's Compensatory Mitigation and Net Positive Impact Projects

Stephanie L. Vail-Muse, stephanie_vail-muse@fws.gov
Regional Energy Coordinator
Northeast Region
U.S. Fish and Wildlife Service

What are the drivers for FWS Consultations?

Relevant Federal Laws and Executive Orders

Endangered Species Act

Migratory Bird Treaty Act

Bald and Golden Eagle Protection Act

Fish and Wildlife Conservation Act

Executive Order Responsibilities of Federal Agencies to Protect Migratory Birds

ESA General Principles

ESA General Principles

- §2 (Findings, purposes, and policy) commits the U.S. Government to preventing extinction by using its authorities to conserve species that are in danger of or threatened with extinction.
- §3 (Definitions) defines “conserve”, “conserving”, and “conservation” as “all methods and procedures which are necessary to bring any endangered species or threatened species to the point at which the measures provided pursuant to this Act are no longer necessary.”

MITIGATION HIERARCHY

STEP 1.
AVOID

STEP 2.
MINIMIZE

STEP 3.
COMPENSATE

DEFINITIONS

MITIGATION

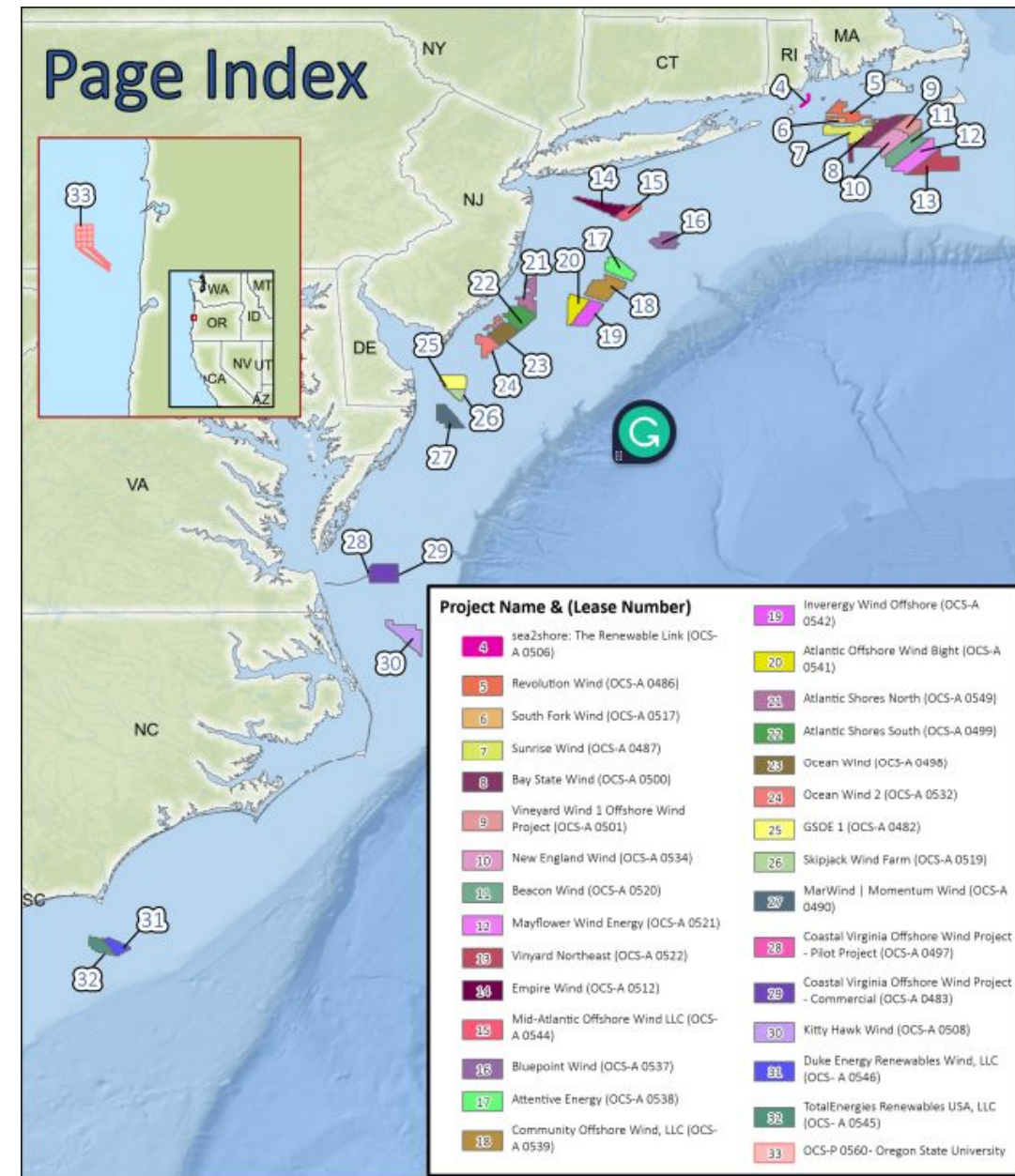
Actions taken to **avoid, minimize, restore and compensate** for the loss of ecological values due to an activity

COMPENSATORY MITIGATION

Replacement, substitution, enhancement, or protection of ecological values to offset **anticipated** losses caused by a permitted activity

SERVICE GOAL

Assisting Federal agencies in developing landscape-scale conservation programs for species that are designed to fully offset the effects of their actions (i.e., achieve "**no-net loss**"?), thereby contributing to the conservation of the species



Numbers pointing to leases on the map represent page numbers in this booklet.



Effects on species groups

Potential effects include

- Avoidance
- Displacement
- Altered habitat use
- Collision
- Cumulative population-level effects

Species groups affected

- Marine birds (including waterfowl & loons)
- Shorebirds
- Landbirds
- ESA-listed and proposed

FWS REGIONAL CONTACTS

Ecological Service, ESA Section 7 Consultations

Stephanie Vail-Muse, stephanie_vail-muse@fws.gov

Christine Willis, christine_willis@fws.gov

Kathryn Matthews, kathryn_matthews@fws.gov

Migratory Birds, MBTA, Research, and Avian Monitoring

Scott Johnston, scott_johnston@fws.gov

Pamela Loring, pamela_loring@fws.gov

Caleb Spiegel, caleb_spiegel@fws.gov

National Wildlife Refuges, Class 1 Airsheds and Wilderness Areas

Virginia Rettig, virginia_rettig@fws.gov

Catherine Collins, catherine_collins@fws.gov

Tim Allen, tim_allen@fws.gov

