



Planning for Successful Biodiversity Outcomes in Offshore Wind Development

RWE Renewables

Rick Robins | April 21, 2023

“The worldwide loss of biodiversity and damage to ecosystems is seen as a serious global risk for the planet. Accelerated by climate change it is becoming increasingly important to address.” — IPCC



RWE
Biodiversity Policy



RWE's Commitments

50

**50 Billion
Euros Invested
gross by
2030 in green
generation
capacity**

50

**50 Gigawatts of
green net
capacity by
2030**



SCIENCE
BASED
TARGETS

RWE is one of the world's Leading renewable energy companies

No. 2

U.S.
Solar



No. 4

U.S.
Solar & Wind



No. 2

Global
Offshore



No. 3

UK
Wind & Solar



No. 4

Europe
Wind & Solar



“For new assets we aim to achieve a net-positive impact on biodiversity by 2030”



RWE Offshore Wind

Internal Policy as a Driver



Policy commitments at the top of the company and the means to **implement** them at the project level can be important drivers to achieve net positive biodiversity outcomes

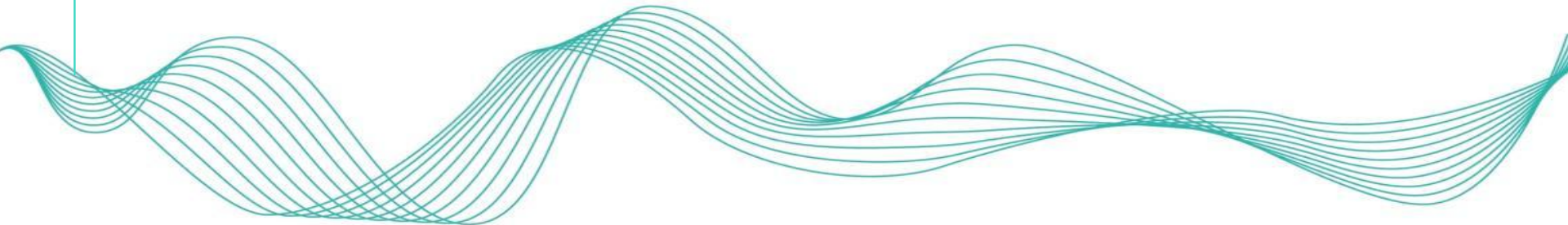


When policy is **aspirational** and **inspirational**

- **“Net Positive impact on biodiversity for all new assets by 2030”**



Ambitious policy can **animate** teams and drive implementation when embraced at the necessary levels



From Ambition to Implementation



Strategic Commitment



Defining Biodiversity Net Positive Impacts
Defining, grounding, and contextualizing NPI



Collaborative Approach
ENGOs, Regional Universities, Regional Science Centers, stakeholders



Define science-based **targets**, develop monitoring plan, **track** performance against targets



Knowledge sharing



Knowledge Transfer

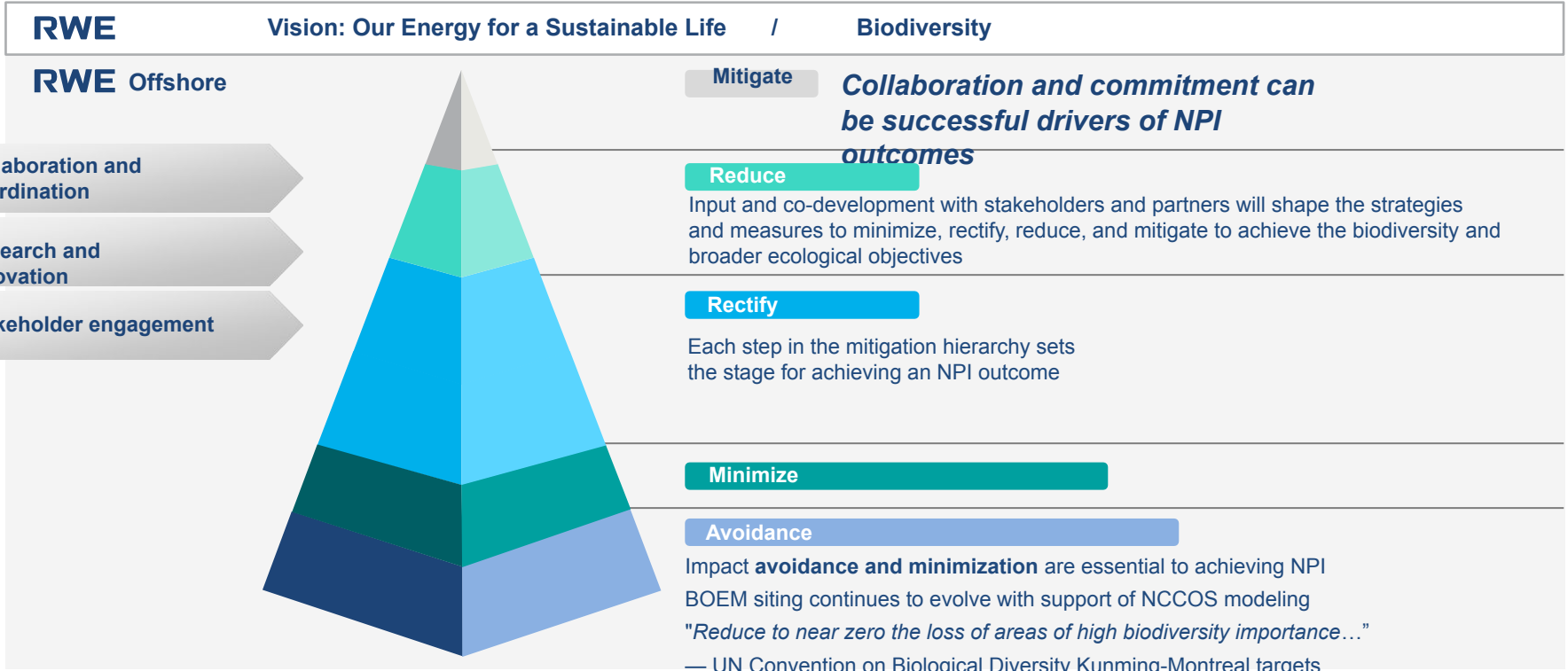
Internal programs and pilot strategies to promote biodiversity knowledge exchange across the global enterprise

Regional Initiatives

Opportunities for regional collaboration and coordination, data sharing/storage, among developers and with regional initiatives

Biodiversity NPI

Alignment of Drivers



RWE