

Tricia K. Jedgele

Vice President of CLF &
Rhode Island Advocacy
Center Director

A healthy,
thriving New
England – for
generations to
come.





clf

conservation law foundation



Climate Change: Resource Management Challenges

- Priority – Prevention or Adaptation
- Regulatory and Statutory Limitations
 - Jurisdictional
 - Costs of Regulatory Reform (staff resources, Takings).
- Data Needs/Resources

Mandate: Offshore Wind Must Be Expediently Deployed



Laws and Agencies

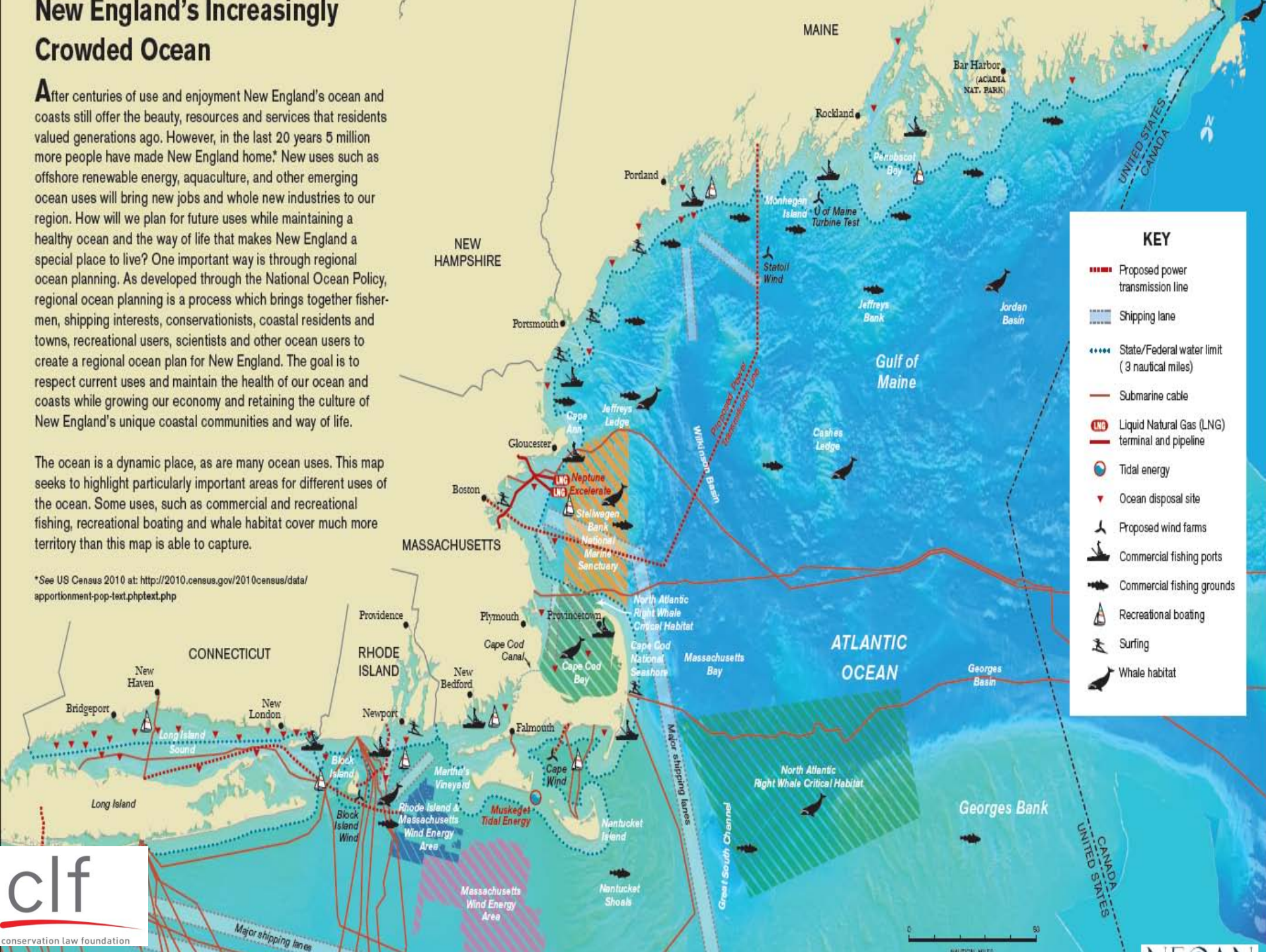
- Smart from the Start Initiative (streamlined NEPA process)
- National Ocean Policy (coordination and comprehensive planning)
- National Environmental Policy Act – BOEM (DOI)
- National Historic Preservation Act - SHPO
- Endangered Species Act (NOAA Marine Species, USFWS (fish))(inclusive of NMFS) (DOI)
- Magnuson-Stevens Fishery Conservation and Management Act (NOAA, Regional Fisheries Management Councils (Essential Fish Habitat guidelines)(EFH) (Commerce)
- Marine Mammal Protection Act(NMFS -division of NOAA (Commerce)
- Coastal Zone Management Act (NOAA) (Commerce)
- Army Corps of Engineers
- States' Coastal Management Agencies and Tribes

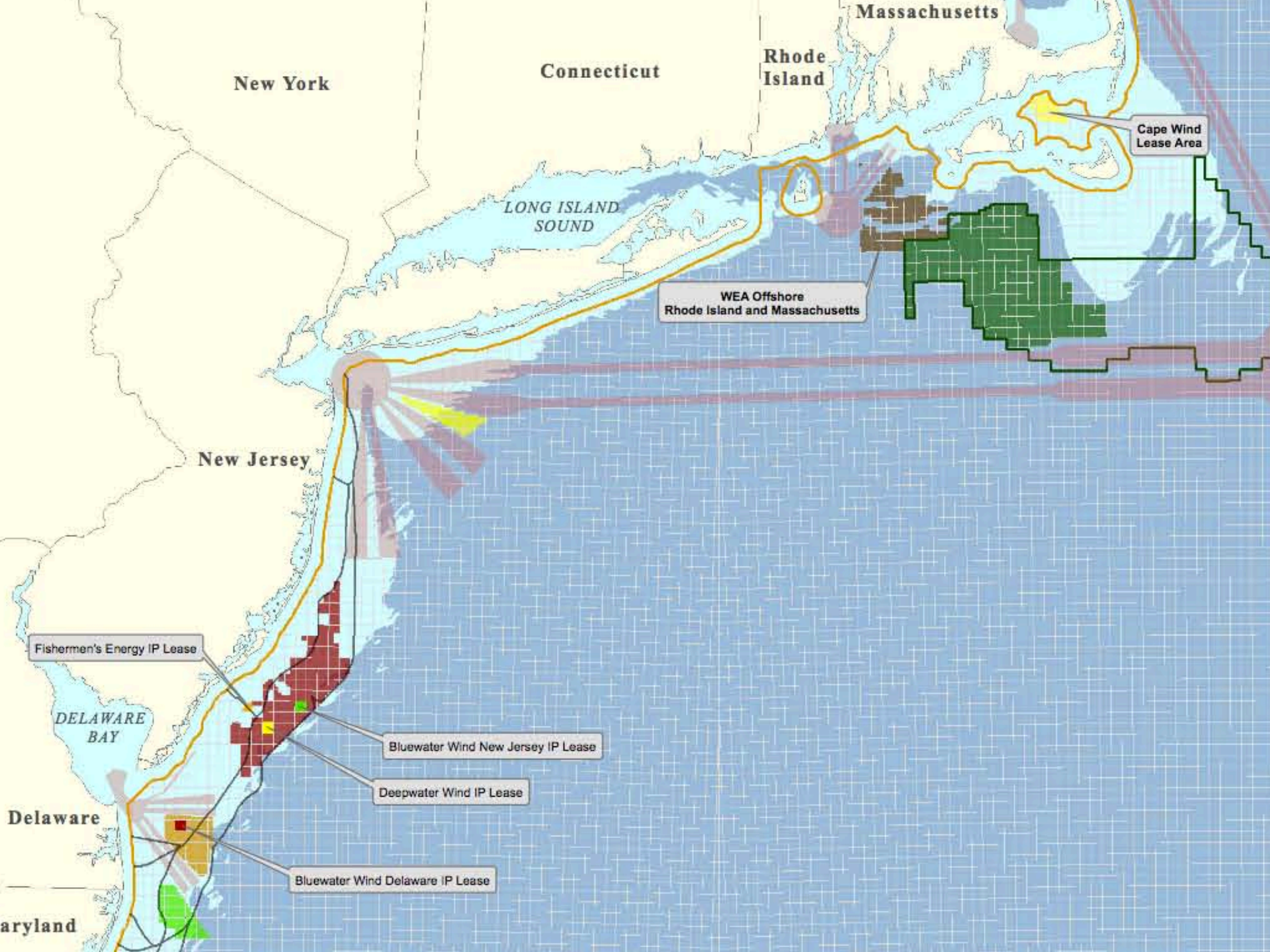
New England's Increasingly Crowded Ocean

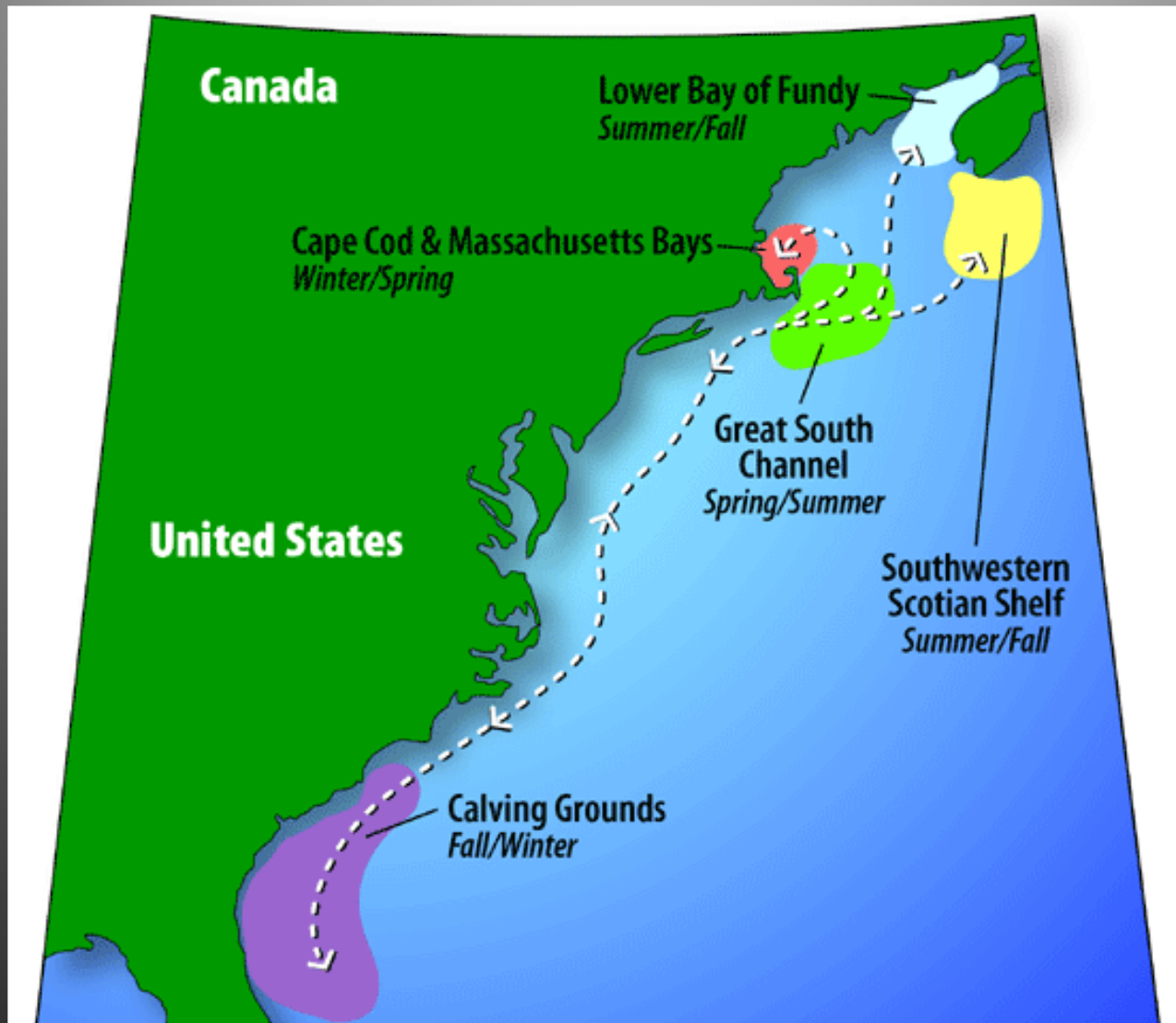
After centuries of use and enjoyment New England's ocean and coasts still offer the beauty, resources and services that residents valued generations ago. However, in the last 20 years 5 million more people have made New England home.* New uses such as offshore renewable energy, aquaculture, and other emerging ocean uses will bring new jobs and whole new industries to our region. How will we plan for future uses while maintaining a healthy ocean and the way of life that makes New England a special place to live? One important way is through regional ocean planning. As developed through the National Ocean Policy, regional ocean planning is a process which brings together fishermen, shipping interests, conservationists, coastal residents and towns, recreational users, scientists and other ocean users to create a regional ocean plan for New England. The goal is to respect current uses and maintain the health of our ocean and coasts while growing our economy and retaining the culture of New England's unique coastal communities and way of life.

The ocean is a dynamic place, as are many ocean uses. This map seeks to highlight particularly important areas for different uses of the ocean. Some uses, such as commercial and recreational fishing, recreational boating and whale habitat cover much more territory than this map is able to capture.

*See US Census 2010 at: <http://2010.census.gov/2010census/data/apportionment-pop-text.php#text.php>







Migratory Path

Adaptation & Waiting for A Crisis

- Re-location of infrastructure
- Re-location of people
- Expanding Regulatory Jurisdiction (wetlands)
- Planning for the 100-year flood
- CONNECTING THE DOTS (Economy and Natural Resources).







"Would you tell me which way I ought to go from here?" asked Alice.

"That depends a good deal on where you want to get," said the Cat.

"I really don't care where," replied Alice.

"Then it doesn't much matter which way you go," said the Cat.

- Lewis Carroll, Alice's Adventures in Wonderland (1865).